

Emily2 User Manual

For

Microsoft Windows XP

Microsoft Windows Vista

Microsoft Windows 7

Microsoft Windows 8

Microsoft Windows 10

Microsoft Windows Server 2003

Microsoft Windows Server 2008

Microsoft Windows Server 2012

Microsoft Windows Server 2016

Microsoft Windows Server 2019

Contents

1. Installation Instructions.....	2
1.1 System requirements.....	2
1.2 Install Emily2	2
1.3 Uninstall Emily2	5
2. Function Descriptions.....	6
2.1 Real-Time Information.....	7
2.2 UPS Rating and Information.....	10
2.3 Function selection.....	11
2.3.1 Control.....	11
2.3.2 Import Setting.....	11
2.3.3 Export Setting.....	12
2.3.4 General Settings	12
2.3.5 SMS.....	16
2.3.6 E-Mail Configuration.....	18
2.3.7 Data Log	20
2.3.8 Event log.....	21
2.3.9 Schedules.....	22
2.3.10 Oscillograph.....	25
2.3.11 About.....	25
2.4 Pop-up message.....	25

1. Installation Instructions

1.1 System requirements

- Operating OS: Windows XP / Vista / 7 / 8 / 10, Windows Server 2003/2008/2012/2016/2019
- Peripherals: RS-232 or USB

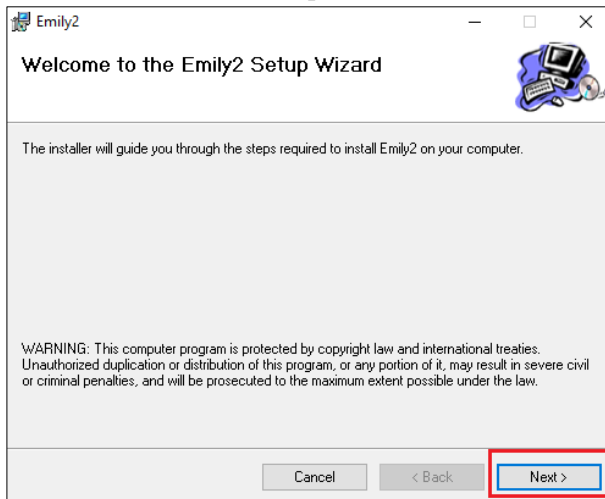
1.2 Install Emily2

Step1. Please login as an Administrator.

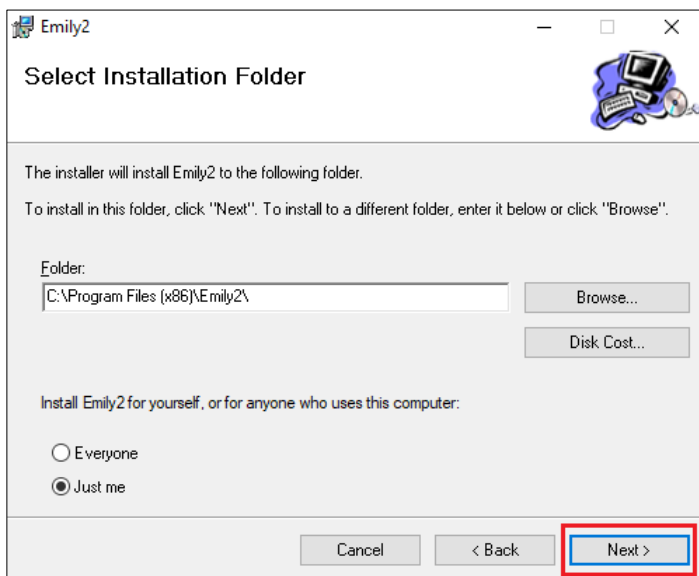
Step2. Double click "Setup.msi" to Install the Emily2.



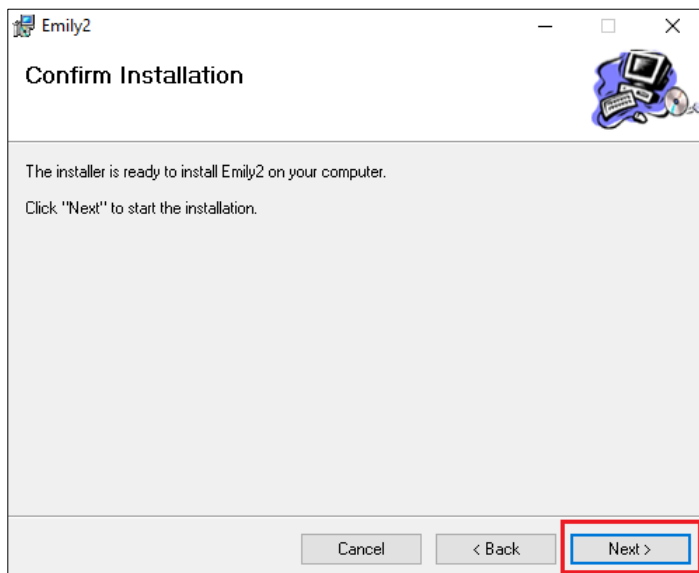
Step3. Click "Next" to the next step.



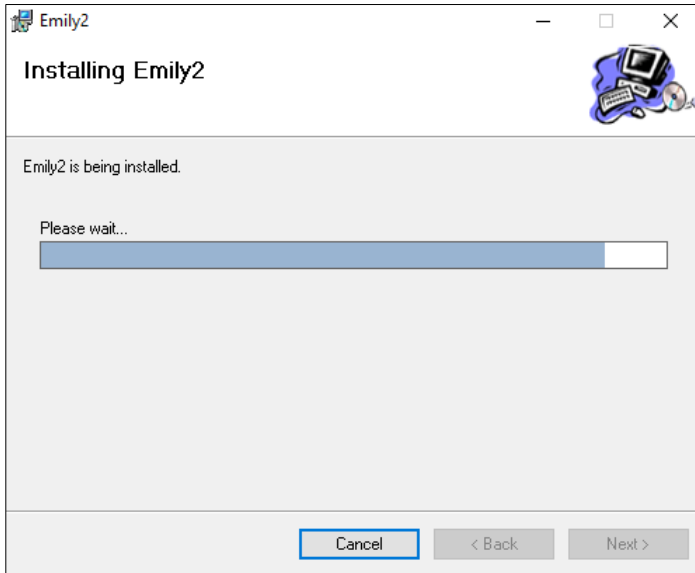
Step4. Click “Browse”, if user wants to change the installing directory.
Otherwise, click “Next” to next step.



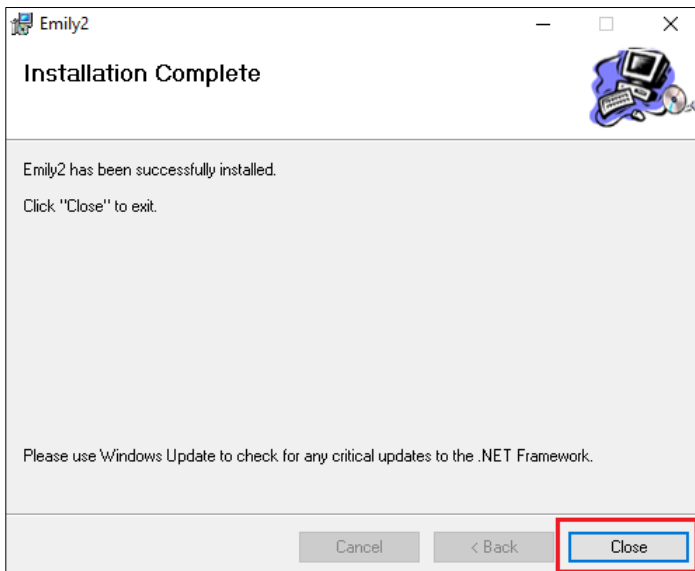
Step5. Click “Next” to next step.



Step6. Installing Emily2 program.



Step7. Click "Close" to finish the installation.

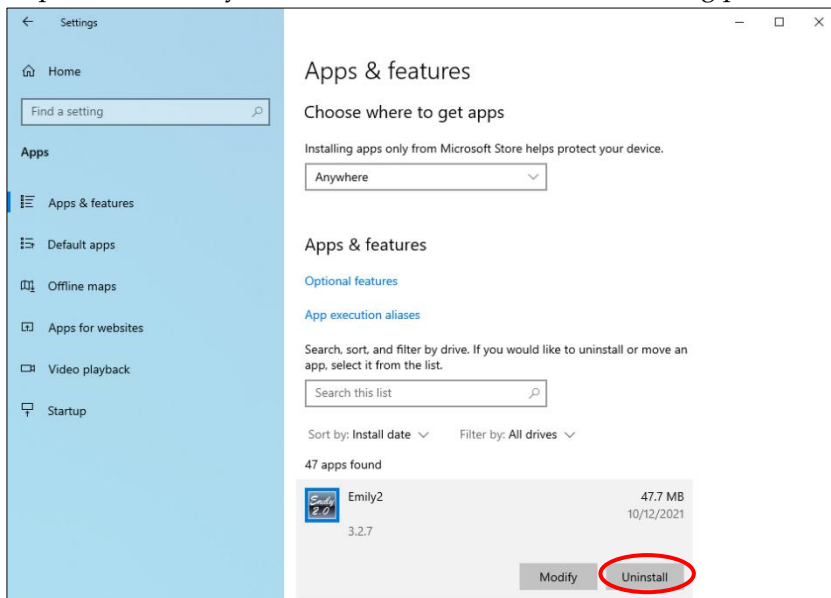


1.3 Uninstall Emily2

Remove Emily2

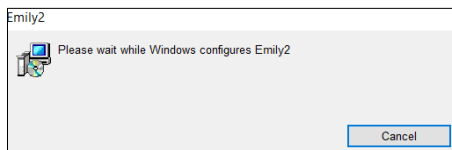
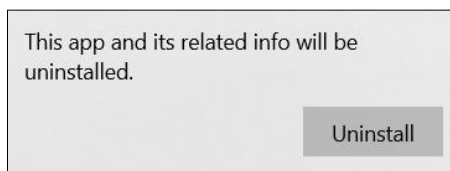
Step1. Go to Settings from your computer and select “Apps & features”.

Step2. Select “Emily2” and click “Uninstall” as the following picture.

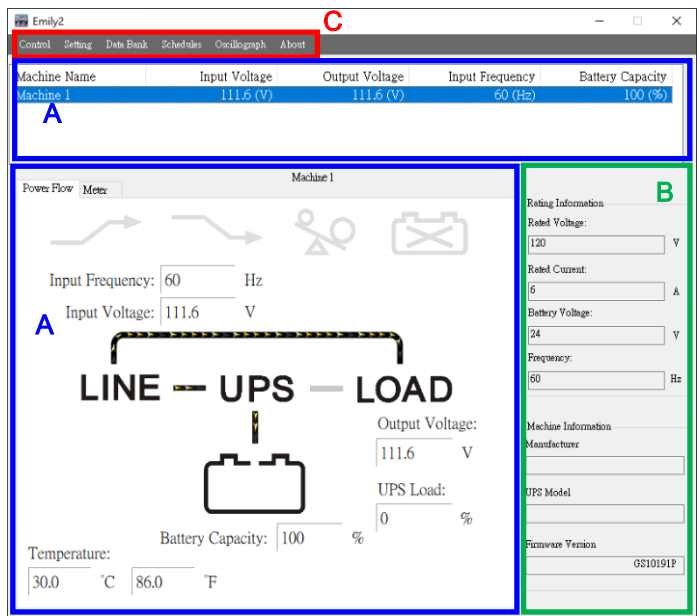


Step3. Click “Uninstall” to confirm removing the Emily2.

Step4. Emily2 icon will disappear in the “Apps & feature” page after uninstall process uninstall.



2. Function Descriptions



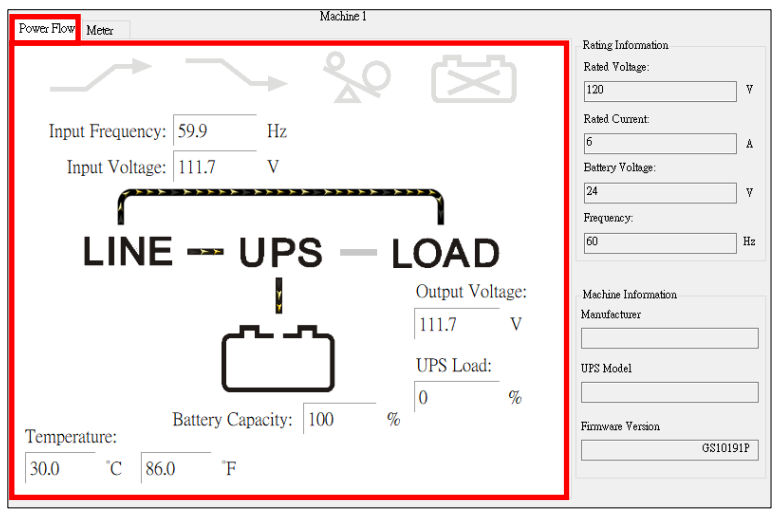
- A. UPS real-time information and status: Detail in section 2.1
- B. UPS rating and information display area: Detail in section 2.2
- C. Function selection area: Detail in section 2.3

2.1 Real-Time Information

Please refer below section for Flow Format Page & Meter Format Page.


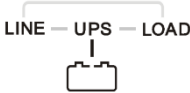
- Input Voltage of UPS
- Output Voltage of UPS
- Input Frequency of UPS
- Load level of UPS
- UPS status
- Power Flow Format Page & Meter Format Page

Power Flow page :

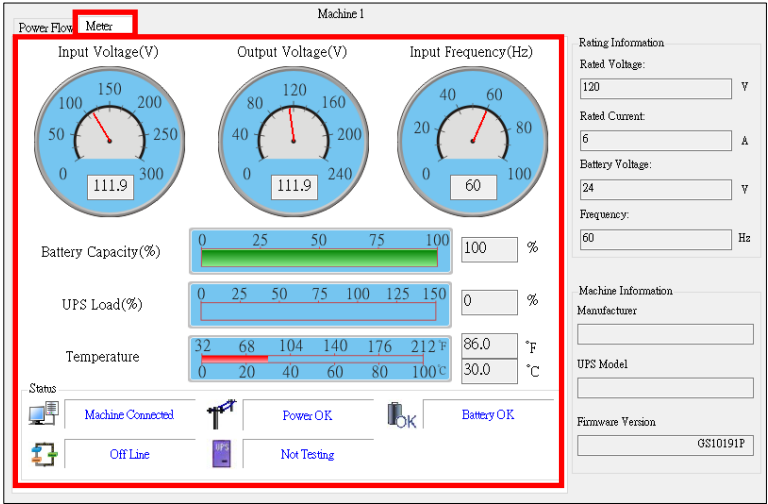


※ Symbols Description






Item	Symbols	Description
1		Boost
2		Buck
3		UPS Overloading
4		Battery Abnormal
5		Battery Normal




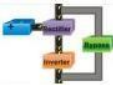




		Battery Low
6		Power flow figure

Meter Page:



※ Symbols Description

Item	Symbols	Description
1		UPS is connected successfully to the computer
		The connection between the UPS & the Computer is disrupted
2		Utility Power Normal
		The utility power is absent or abnormal conditions
3		Battery Level Normal

		<p>Battery Low.</p> <p>The UPS battery is near to end of discharge or is at low power level (2 Icon swap)</p>
		
		UPS Battery Abnormal
4		ON Line Model
		OFF Line Model
5		Under self test
6		Bypass mode(2 Icon swap)
		

2.2 UPS Rating and Information

Rating Information

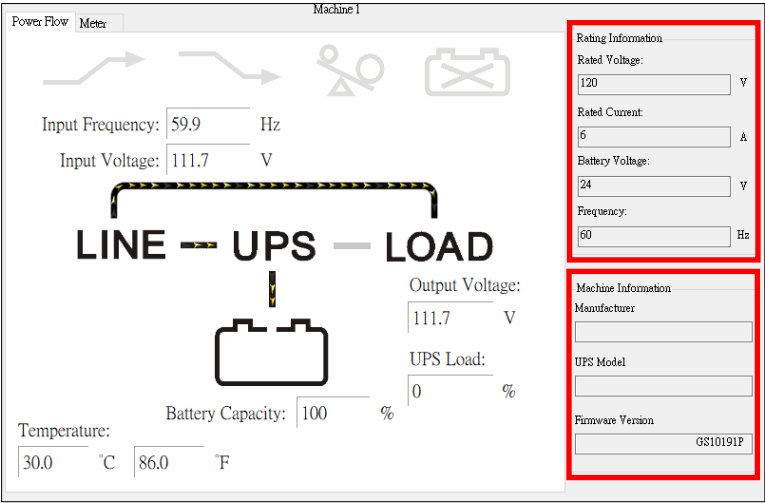
Provides rating of UPS such as:

- Rating Voltage
- Rating Current
- Battery Voltage
- Frequency

Machine Information

Provides information of UPS such as:

- Manufacturer
- UPS Model
- Firmware Version



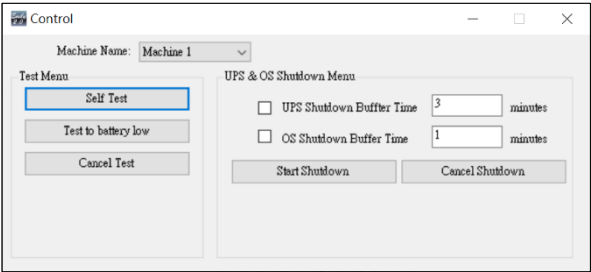
2.3 Function selection

This chapter will introduce how to use or configure for those specific function “Control”, “Import Setting”, “Export Setting”, “General Setting”, “E-mail Setting”, “SMS Setting”, “Data Log”, “Event Log”, “Schedules”, “Oscillograph” and “About”.

2.3.1 Control

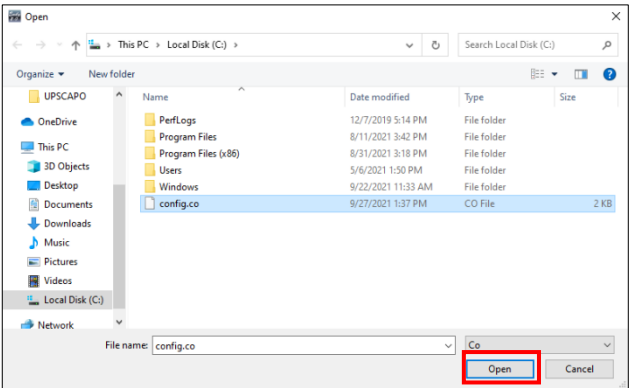
Command UPS directly for the following test.

- UPS Self-Test
- UPS Self-Test Test to battery low
- Cancel UPS Self-Test
- UPS & OS Shutdown
- UPS & OS Cancel Shutdown



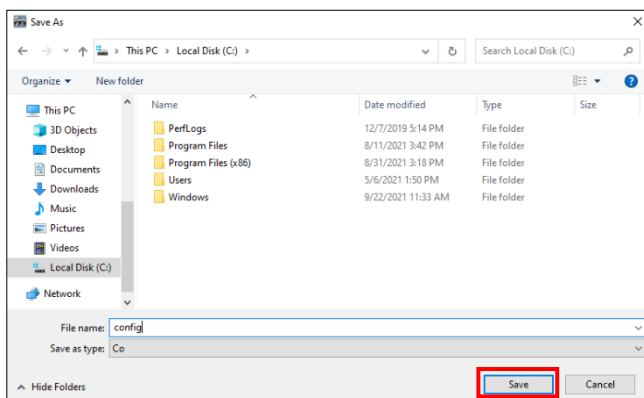
2.3.2 Import Setting

Select the Setting file which you want and click “Open” to Import the Settings to Emily2.



2.3.3 Export Setting

Select Export Folder and click “Save” to save the settings.



2.3.4 General Settings

Allows user to select and set the connecting RS-232/USB or Remote, set to Data Log function and set to turn of UPS or OS condition etc.

2.3.4.1 Setting amount of unit and Machine name

Total Unit of Machine	1	Protocol	Standard
Name	Machine 1	Machine Number	1
	Machine 2	Machine Number	
	Machine 3	Machine Number	
	Machine 4	Machine Number	

2.3.4.2 Choose the Protocol

Standard: for Standard or Remote

Protocol	Standard
	Standard
	Remote

Please refer to 2.3.4.8 for detail if choose the Remote.

2.3.4.3 Setting Communication Interface

Communication	RS232	Com Port	
Baud Rate	2400	Data Log Record:	<input checked="" type="checkbox"/>
		per 10 secs	
		Maximum	Unlimited

- Communication Interface : USB / RS232
- Baud Rate : 2400bps/4800bps/9600bps
- Con Port :COM1~COMX

2.3.4.4 Log Record setting

Communication	RS232	Com Port	
Baud Rate	2400	Data Log Record:	<input checked="" type="checkbox"/>
		per 10 secs	
		Maximum	Unlimited

- Enable the Data Log Record function
- Set Record timer interval
- Set data storage count of record list

2.3.4.5 Data retention setting

The time of data stored in a database can set by the user. If the value is "0", it means database will never be deleted.

Days of data retention	0	(0:Never Delete)
------------------------	---	------------------

2.3.4.6 Language

The Emily2 provides various major languages for user. The initial is English.

Language	English
----------	---------

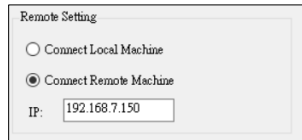
2.3.4.7 Pop-up Message

Choosing if you want to see pop-up message when the emergence event occurs.

<input checked="" type="checkbox"/> Enable Pop-up Message

2.3.4.8 Remote Setting

The "Connect Remote Machine" is for connecting the Emily2, which installed on another computer, and the IP address should be the master PC ,which connected UPS.



Remote Setting

☐ Connect Local Machine

☒ Connect Remote Machine

IP:

Note:

With "Connect Remote Machine" you cannot send commands like Scheduling or UPS turn off.

2.3.4.9 Enable ACPI Shutdown

When Enable ACPI Shutdown, all of the Shutdown functions controlled by ACPI.

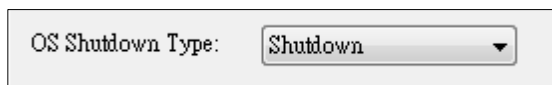


☒ Enable ACPI Shutdown

☐ Emily2 Shutdown For OS

2.3.4.10 OS Shutdown Type

OS shutdown options.



OS Shutdown Type:

2.3.4.11 Saved Log

If auto saving function is set, the Emily2 will display the closed record after restart.

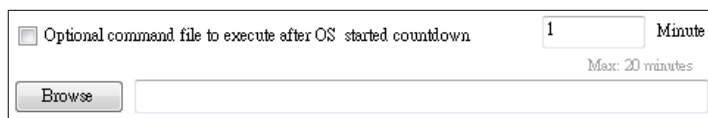


☐ Autoseave Application Status

☐ Display Closed Files Record on Emily2 Restart

2.3.4.12 Optional command

Set the file to be executed before the system shutdown. The selectable time is from 0 min. to 20 min.



☐ Optional command file to execute after OS started countdown Minute

Max: 20 minutes

2.3.4.13 When Power Failure, OS Shutdown Buffer Time

Set the Warning Time for system shutdown operation after Power Failure. The selectable time is from 1 min. to 2880 min.

<input type="checkbox"/> When Power Failure, OS Shutdown Buffer Time (Range:1-2880)	10	Minute
---	----	--------

2.3.4.14 When Battery Low, OS Shutdown Buffer Time

Set the Warning Time for system shutdown operation after Battery Low. The selectable time is from 0 min. to 600 min.

<input type="checkbox"/> When Battery Low, OS Shutdown Buffer Time (Range:0-600)	0	Minute
--	---	--------

2.3.4.15 When Battery Capacity less than or equal the setting level, OS Shutdown Buffer Time

Set the Warning Time for system shutdown operation after Battery Low. The selectable time is from 1 min. to 600 min.
The selectable battery Capacity is from 0% to 100%.

<input type="checkbox"/> When Battery capacity Low than	20	% (0-100%)
OS Shutdown Buffer Time (Range: 1-600)	1	Minute

2.3.4.16 Action When Utility Recovery

When utility Recovered, OS will be continued or cancel the shutdown.

When Utility Recovered,	OS Cancels shutdown
-------------------------	---------------------

2.3.4.17 Turn off UPS

Set time interval from Windows shutdown to UPS turn-off. The selectable time is from 0.2 min. to 10min.

<input checked="" type="checkbox"/> Turn Off UPS
Time Needed for Shutdown Sequence Before UPS Turns Off : 2

2.3.5 SMS

Configure to send the event message (e.g. AC Power Fail) to specific one by SMS. The following section is for the detail configuration approach.

SMS Setting

SMS Server:

ID: API KEY:

PassWord: API ID:

Phone Number: **A** Send Test

Send Setting

<input type="checkbox"/> UPS Connected	SMS message UPS connect
<input type="checkbox"/> UPS Disconnected	SMS message UPS disconnect
<input type="checkbox"/> Shutdown OS	SMS message System shutdown
<input type="checkbox"/> Power Fail	SMS message Power failure
<input type="checkbox"/> Battery Low	SMS message Battery low
<input type="checkbox"/> Power Restored	SMS message Power restored
<input type="checkbox"/> UPS Shutdown	SMS message UPS shutdown
<input type="checkbox"/> Over Load	SMS message Over load
<input type="checkbox"/> Battery Failed	SMS message Battery weak
<input type="checkbox"/> UPS Self Testing	SMS message UPS test

D OK Cancel

These currently have 3 third-party SMS providers supported by Emily2 program. For more information on subscriptions and charges, please go to their respective website as follow:

1) For [Every8d] : Go to <http://www.every8d.com/>

Note : Please subscribe as “Corporate” account in order to use Emily2 program SMS function.

2) For [Voipcheap] : Go to <http://www.VOIPcheap.com/>

Note : Please buy credits in order to use Emily2 program SMS function.

3) For [Clickatell] : Go to <http://www.clickatell.com/>

Note : Payment has to be made to obtain an “API ID” before use.

A. Send Test :

Click to send a test message.

B. Account Settings :

Insert the SMS provided name, ID, passwords, “API-ID₍₁₎”, “API-KEY₍₁₎” and mobile phone number (international dialing format, do not put the + or 00, example for number 003934772xxxxx insert 3934772xxxxx).

Note : Do not send to more than 1 mobile phone number.

(1) For Clickatell subscriber only

C. Event & Message Selections :

Click to select the desire Events to be broadcasted and the respective message contents (You may change and retype the Message contents to meet your requirement in English).

D. Save Setting :

Click “OK” to save & apply settings

Note : Internet Firewall may not allow this SMS function. If you have installed Firewall please allow this function.

2.3.6 E-Mail Configuration

Configure to send the event message (e.g. AC Power Fail) to specific one by E-mail. The following section is for the detail configuration approach.

Email Setting

User Name: Emily2

User Email Address: XX@XXX.XXX

Password: *****

SMTP Server: XXX.XXX.XXX

SMTP Server Port: 25

Receiver Name: User

Mail To: XX@XXX.XXX.XXX

Subject: Hello

Send Setting

<input type="checkbox"/> UPS Connected	Mail message UPS connect
<input type="checkbox"/> UPS Disconnected	Mail message UPS disconnect
<input type="checkbox"/> Shutdown OS	Mail message System shutdown
<input type="checkbox"/> Power Fail	Mail message Power failure
<input type="checkbox"/> Battery Low	Mail message Battery low
<input type="checkbox"/> Power Restored	Mail message Power restored
<input type="checkbox"/> UPS Shutdown	Mail message UPS shutdown
<input type="checkbox"/> Over Load	Mail message Over load
<input type="checkbox"/> Battery Failed	Mail message Battery weak
<input type="checkbox"/> UPS Self Testing	Mail message UPS test

OK Cancel

A. Email Test :

Click to send a test message to confirm the settings are correct.

B. Account Settings :

- User Name: Sender
- User Email Address: select a sender E-Mail
- Password: Password of your email server
- SMTP Server: SMTP server or IP address
- SMTP Server port: SMTP Server port
- Receiver Name: name of receiver
- Mail To: Mail address of receiver
- Subject: Subject of E-Mail

Note : If you want to send an email to more than 1 email address, you must use “;” to separate email addresses.

C. Send Setting :

You can use the default message or set or modify your own in English.

D. Save Setting :

Click “OK” to save and apply settings.

Note : Internet Firewall may not allow this E-Mailing function.

2.3.7 Data Log

The data log can be read directly via Emily2 or export to an file with xls or txt format for application. The following section is for the detail operation.

Time	Input Voltage	Output Voltage	UPS Load	Input Frequency	Battery Capacity	Temperature
2021/09/27 15:27:20	112.2	112.2	0	60	100	30
2021/09/27 15:27:18	112.2	112.2	0	60	100	30
2021/09/27 15:27:17	112.2	112.2	0	60	100	30
2021/09/27 15:27:15	112.2	112.2	0	60	100	30
2021/09/27 15:27:14	112.1	112.1	0	60	100	30
2021/09/27 15:27:13	112.1	112.1	0	59.9	100	30
2021/09/27 15:27:11	112.2	112.2	0	59.9	100	30
2021/09/27 15:27:10	112.2	112.2	0	59.9	100	30
2021/09/27 15:27:08	112.2	112.2	0	59.9	100	30
2021/09/27 15:27:07	112.2	112.2	0	59.9	100	30
2021/09/27 15:27:05	112.3	112.3	0	60	100	30
2021/09/27 15:27:04	112	112	0	60	100	30
2021/09/27 15:27:03	112.3	112.3	0	60	100	30
2021/09/27 15:27:01	112.3	112.3	0	60	100	30
2021/09/27 15:27:00	112.3	112.3	0	60	100	30

A area:

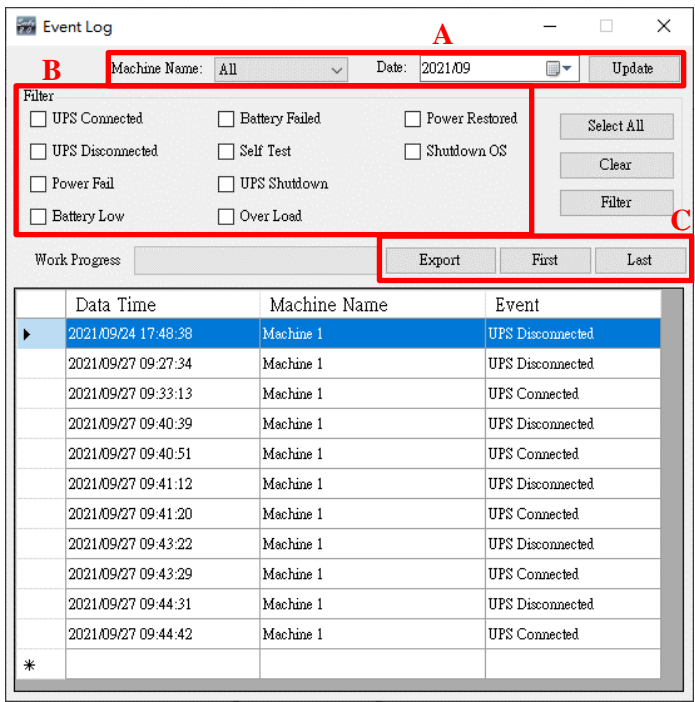
Choose the "Machine Name", "Date", and click "Update" for data refreshing.

B area:

- Export: Click to export the current data into "xls" or "txt" format.
- First: Click to go to the first recorded entry.
- Last: Click to go to the last recorded entry.

2.3.8 Event log

The event log can be read directly via Emily2 or export to an file with xls or txt format for application. The following section is for the detail operation.



A area:
Choose the “Machine”, “Date”, and click “Select” for data refreshing.

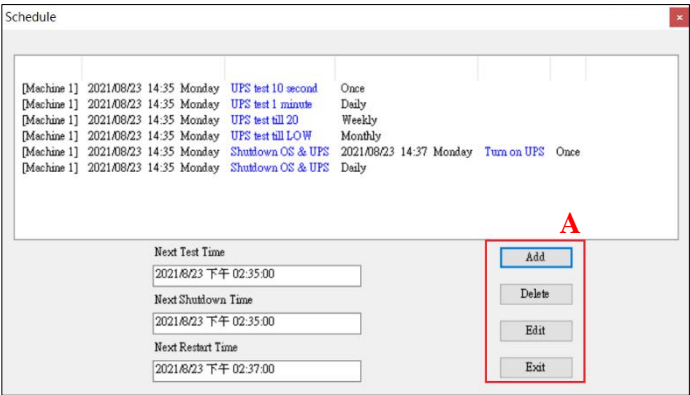
B area:
Event log filter for read or export

C area:

- Export: Click to export the current data into “xls” or “txt” format.
- First: Click to go to the first recorded entry.
- Last: Click to go to the last recorded entry.

2.3.9 Schedules

Emily2 supports the scheduling self test, turn-on and turn-off function for UPS. The following section is for the detail configuration approach.



A area:

- Add: Create a new task. Please refer to section 2.3.9.1 for detail
- Delete: Delete a task
- Edit: Edit a task Please refer to section 2.3.9.2 for detail
- Exit: Exit the Schedules

2.3.9.1 Add Schedules

Task

A Date : 2021/08/23 星期一 Machine : Machine 1
Time : 14:15

Frequency
☒ Once ☐ Daily ☐ Weekly ☐ Monthly

B Control
☒ UPS Self Test 10 Secs
☐ UPS Self Test(1-99) 1 minutes
☐ UPS Self Test Until Battery Capacity 20
☐ UPS Self Test Until Battery Low
☐ Shutdown Operating System and UPS
☒ Turn on UPS

C Add Cancel

A. Executive Time :

- Date: Date Setting.
- Time: Time Setting.
- Frequency: Set execute cycle of the schedule.

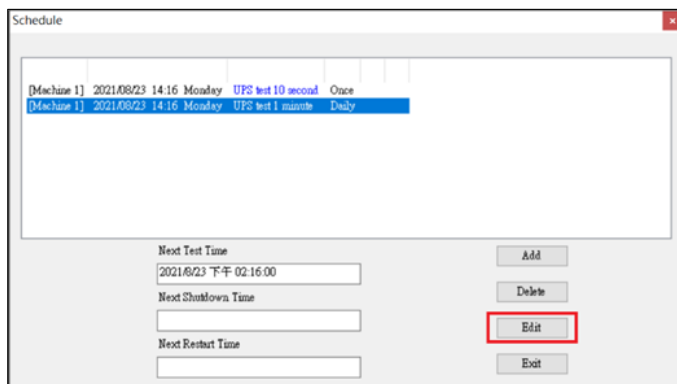
B. Control :

- Self-test for 10 seconds.
- Self-test for (1-99) minutes.
- Self-test until Battery condition xx%
- Self-test until Low Battery condition.
- Shut Down Operating System and UPS

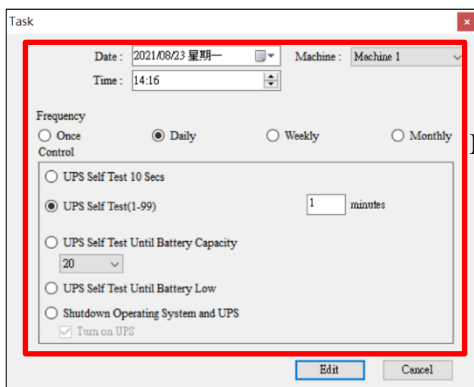
C. Function: Add or Cancel schedule

2.3.9.2 Edit Schedules

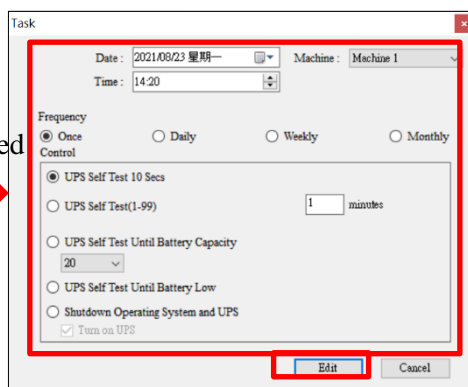
Frist, Select the schedule you want to modify. And click “Edit” to modify task.



Click “Edit” to modify and save this task.



Modified



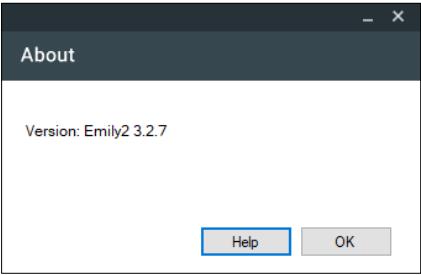
2.3.10 Oscillograph

It is visual data curve for easy check.



2.3.11 About

It displays copyright and version information of Emily2.



2.4 Pop-up message

When event occurred (e.g. power fail battery low ... etc.), Emily2 will pop up a message to remind the user to handle it.



